



Transferring Modules with WinSCP

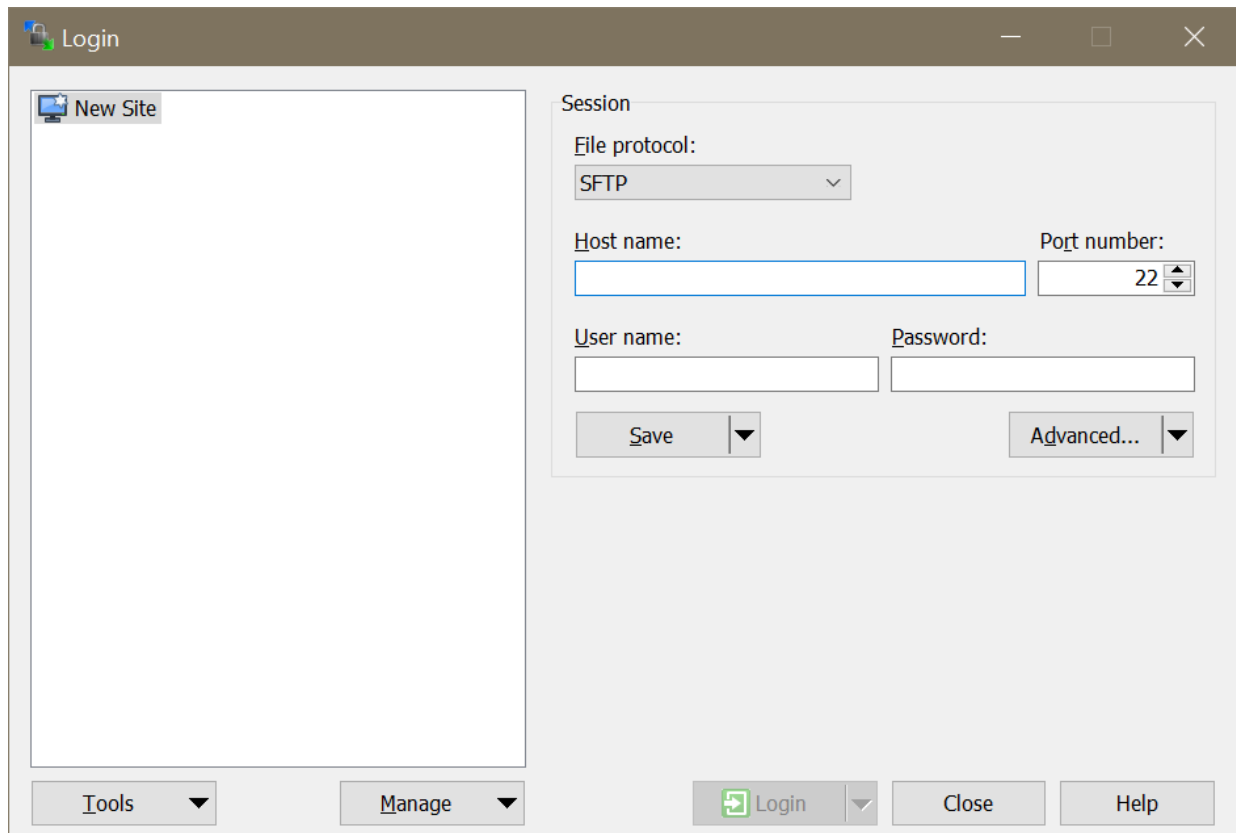
This tutorial will show you how to transfer modules to a RACHEL-Plus from your PC.

Prerequisites

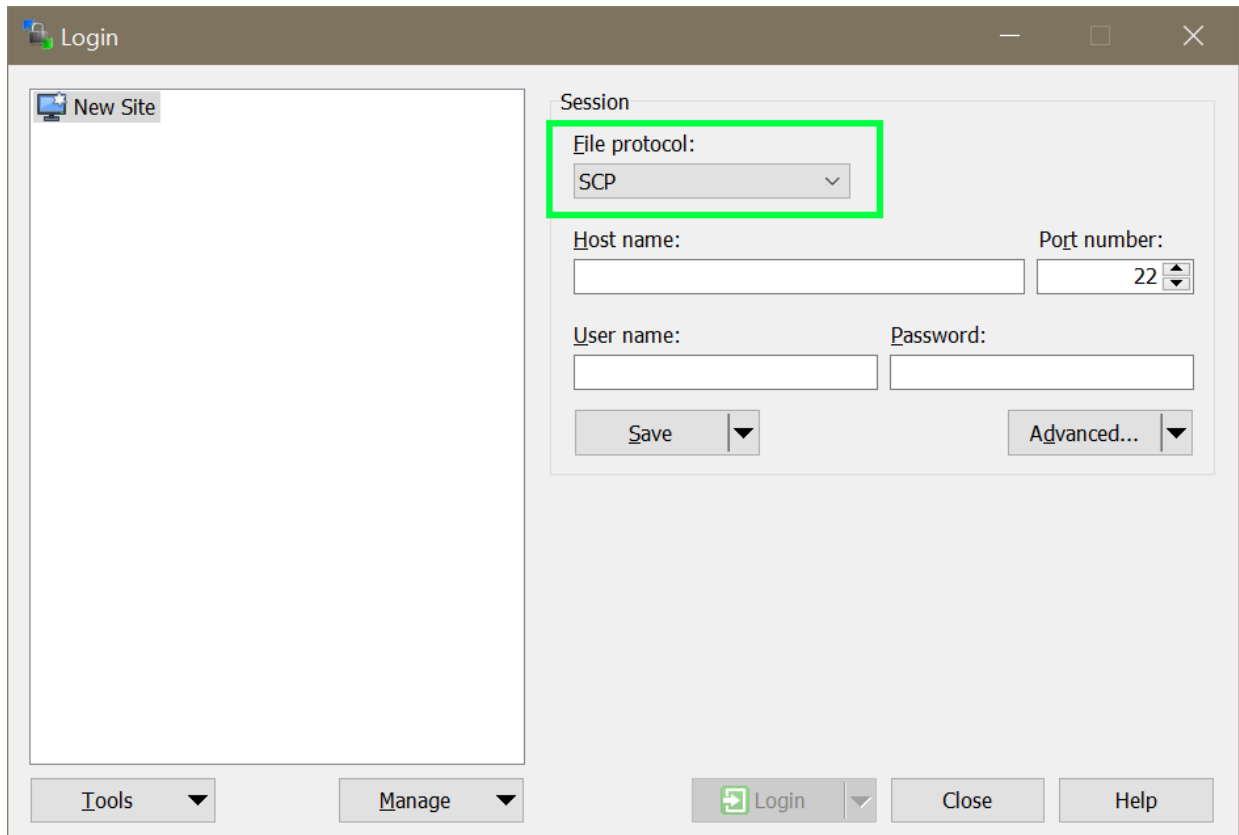
1. A RACHEL-Plus with SSH enabled
2. Your RACHEL-Plus SSH login/password. If you do not have your SSH login/pass, please contact support at <https://community.worldpossible.org> with your purchase order #
3. Download and install WinSCP from <https://winscp.net/eng/download.php>

Transferring

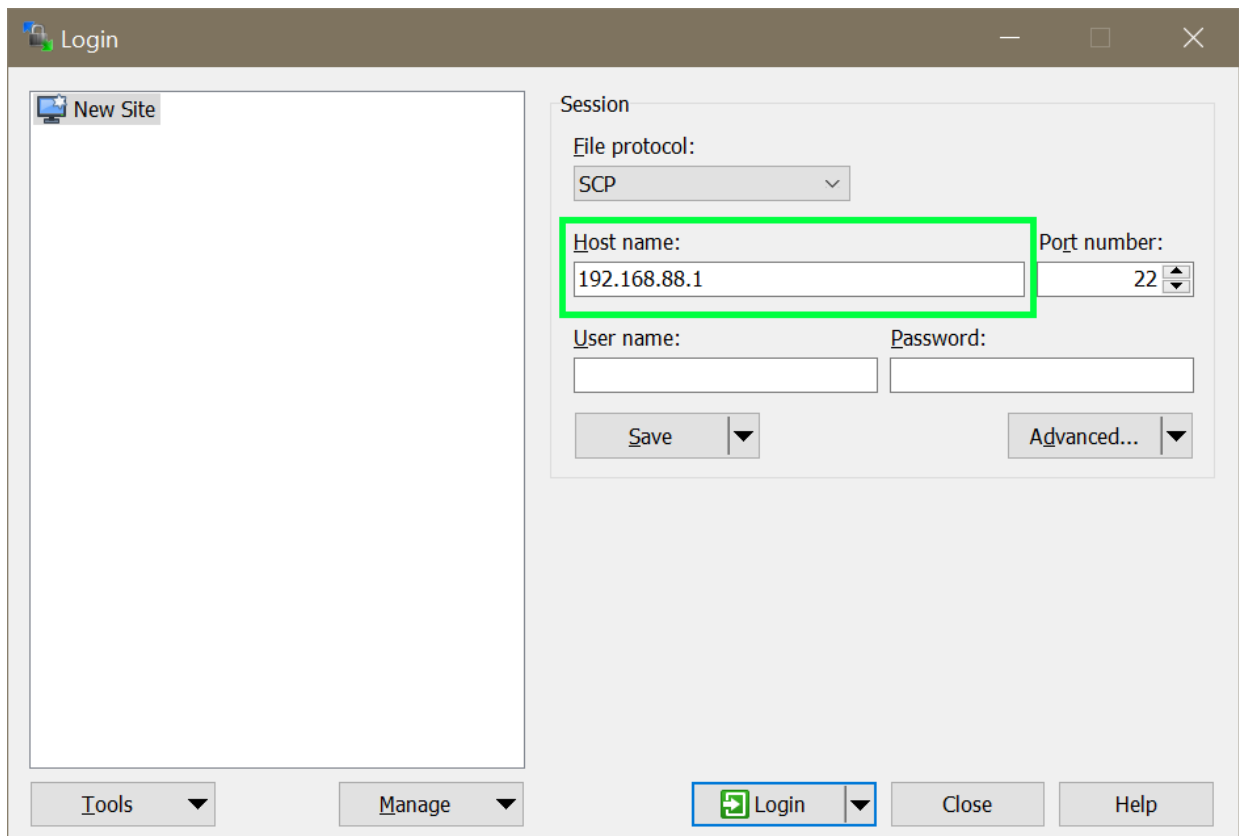
1. Open WinSCP on your PC



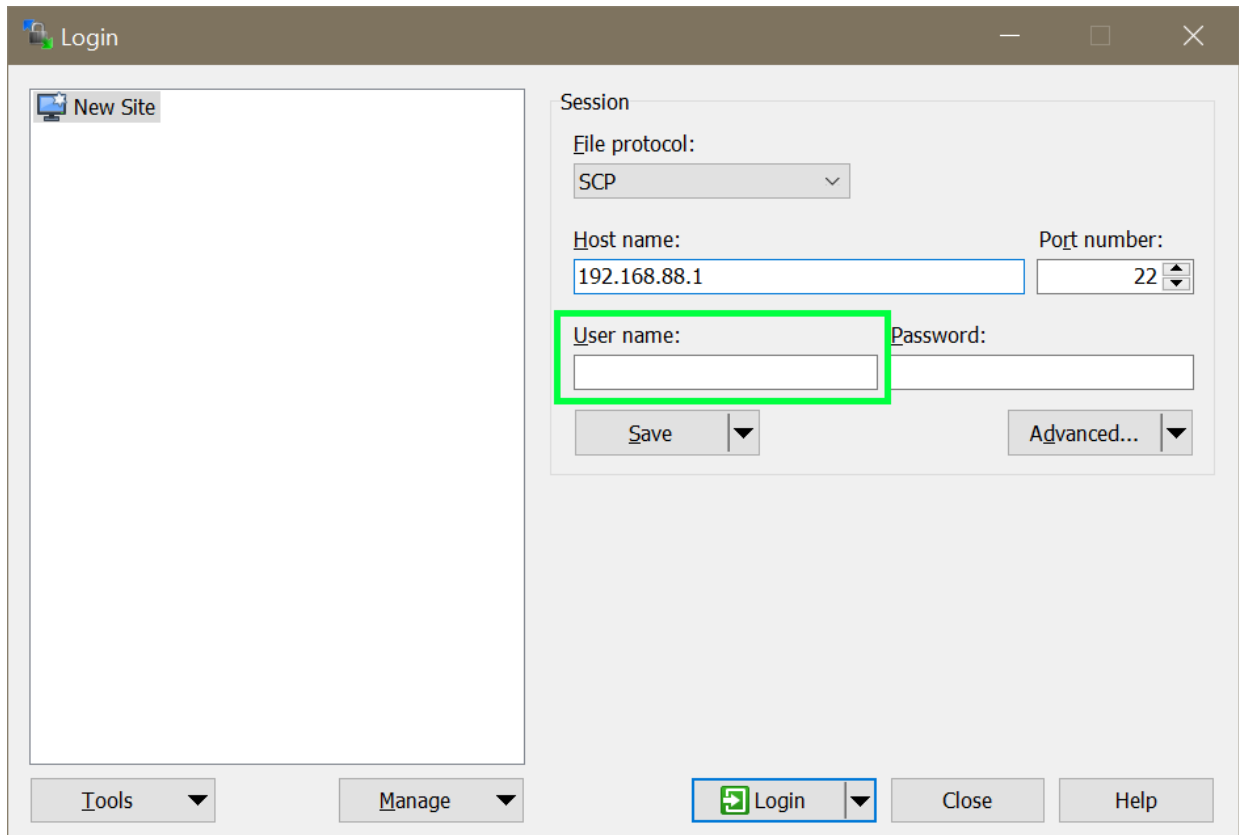
2. Under "File Protocol" select "SCP"



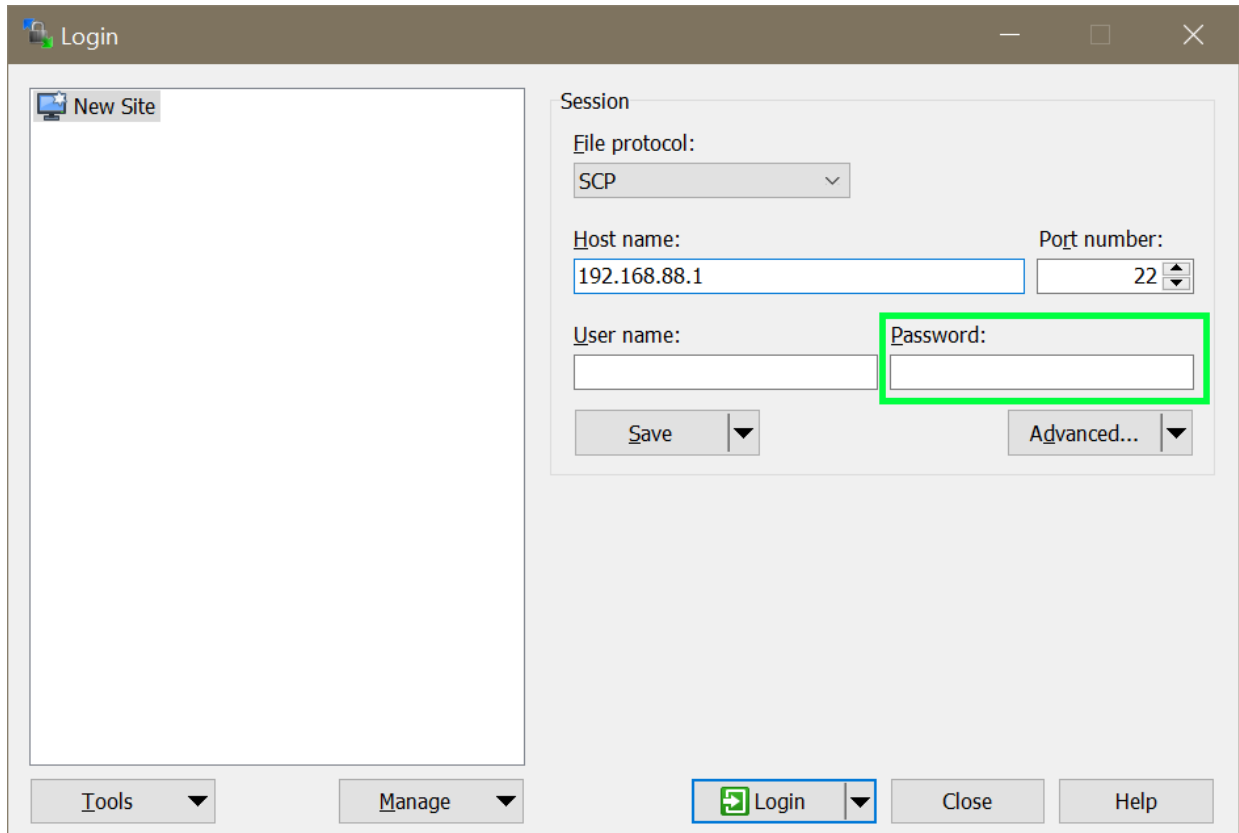
3. Under "Host name" enter the IP address of your RACHEL-Plus. The default when connected over WIFI is 192.168.88.1



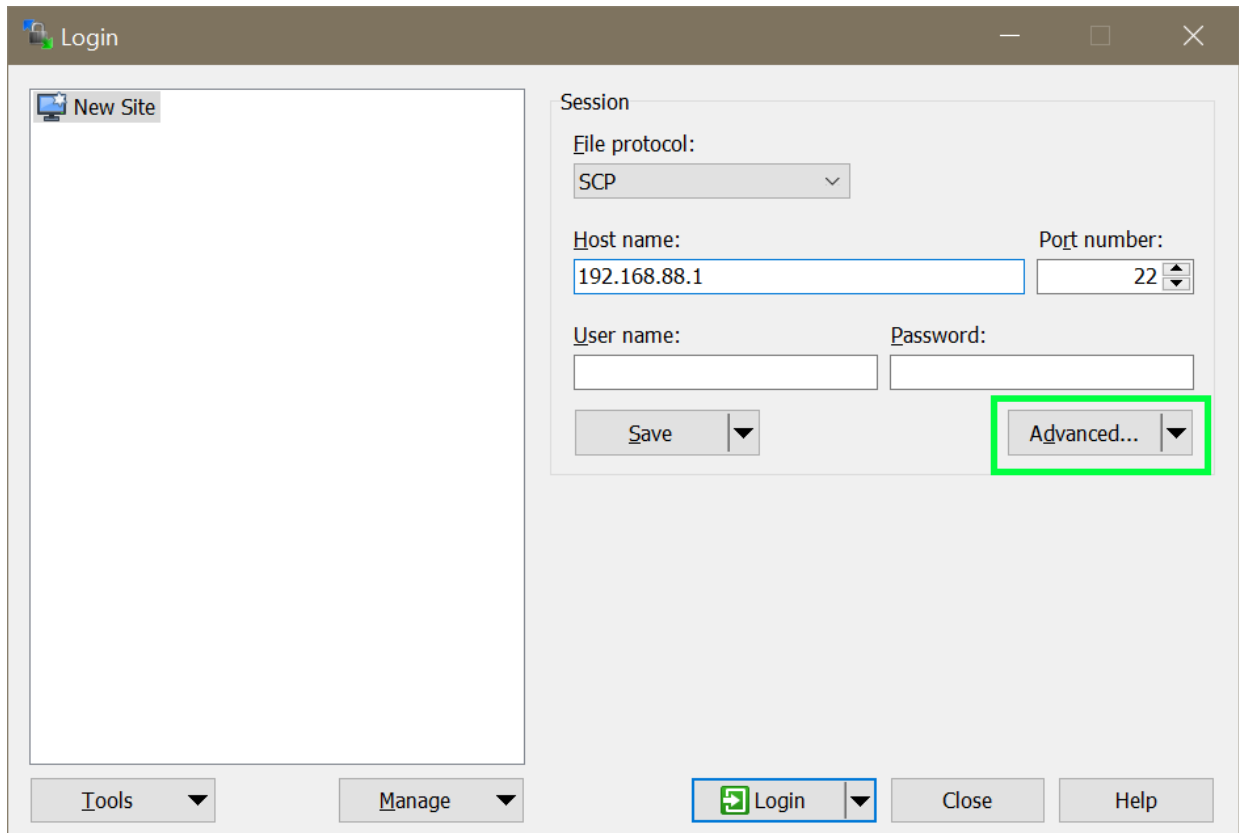
4. Under "User name" enter your SSH username



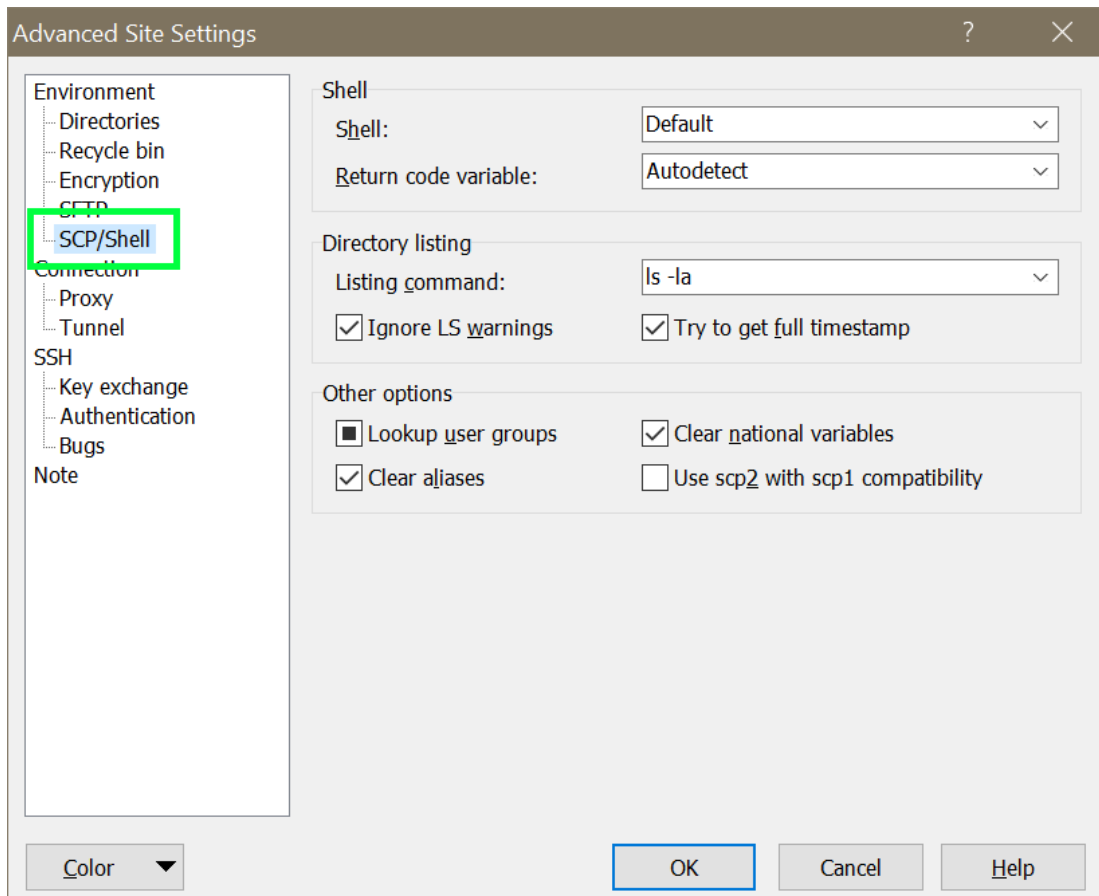
5. Under password enter your SSH password



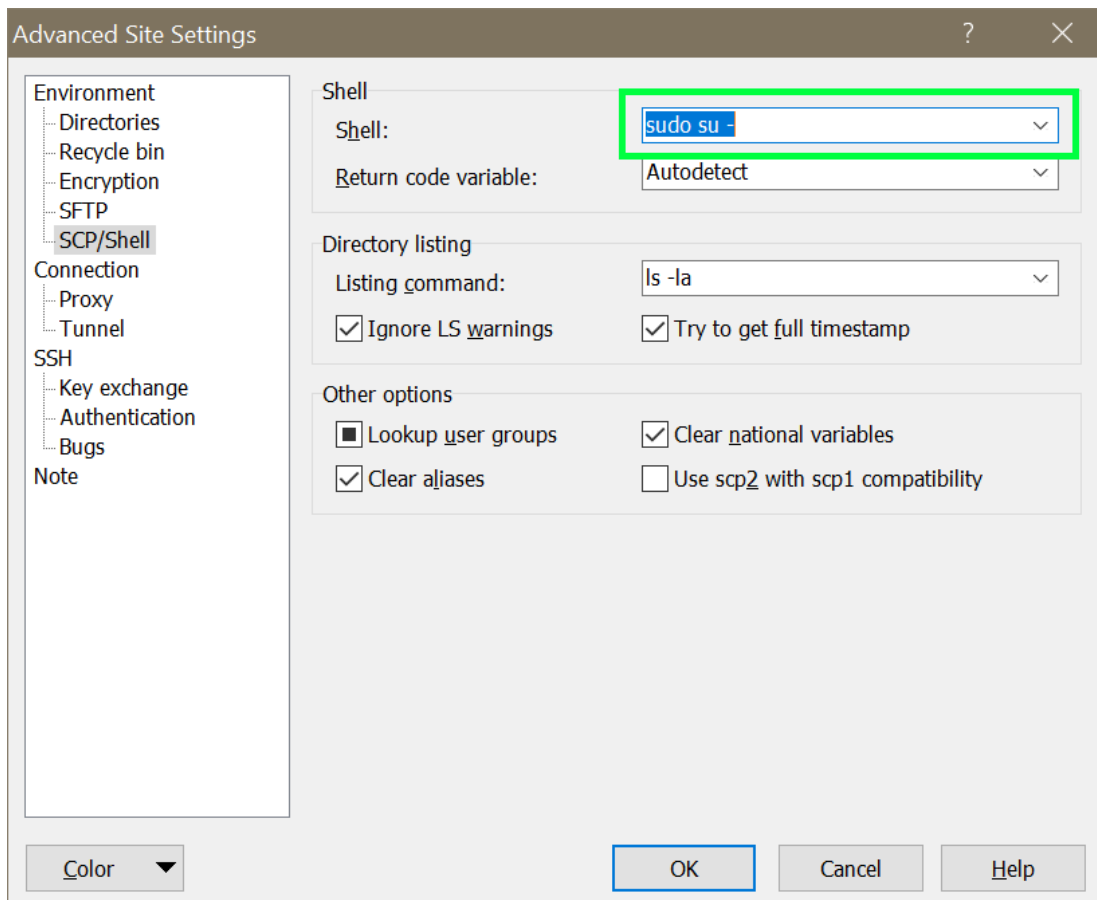
7. Click the "Advanced" button



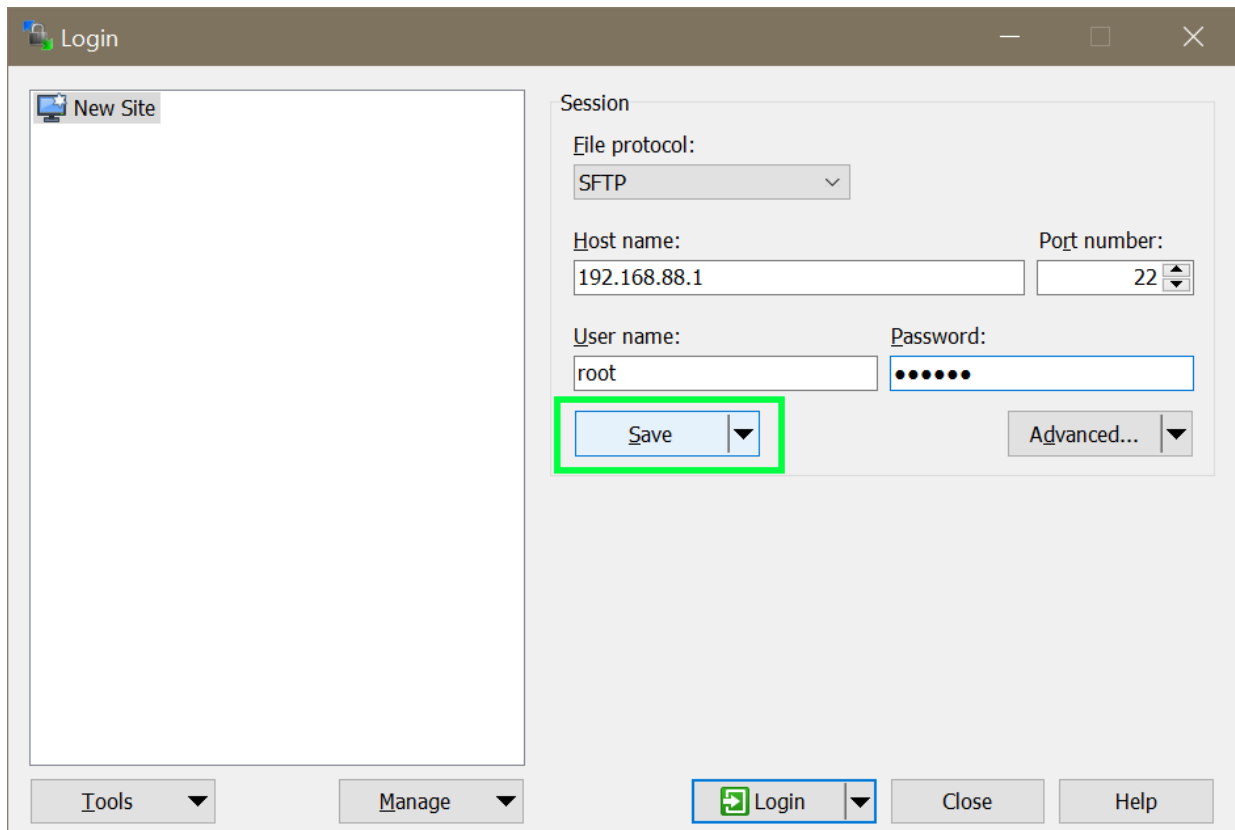
8. Select SCP/Shell on the left panel



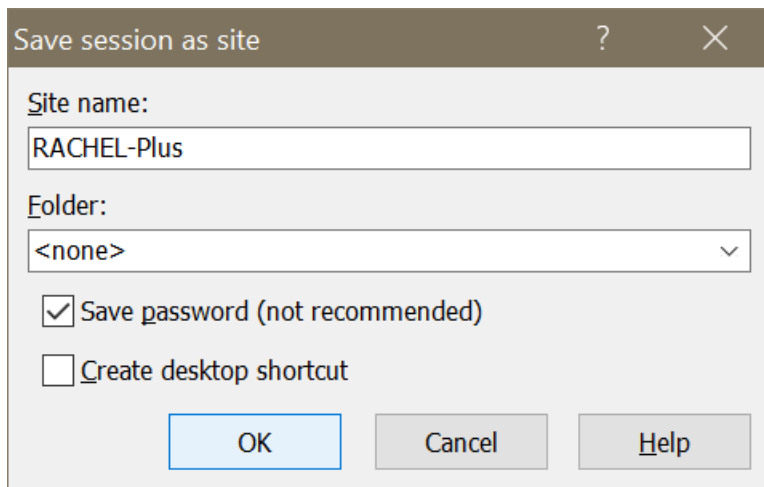
9. Under the "shell" drop down select "sudo su -" then click OK



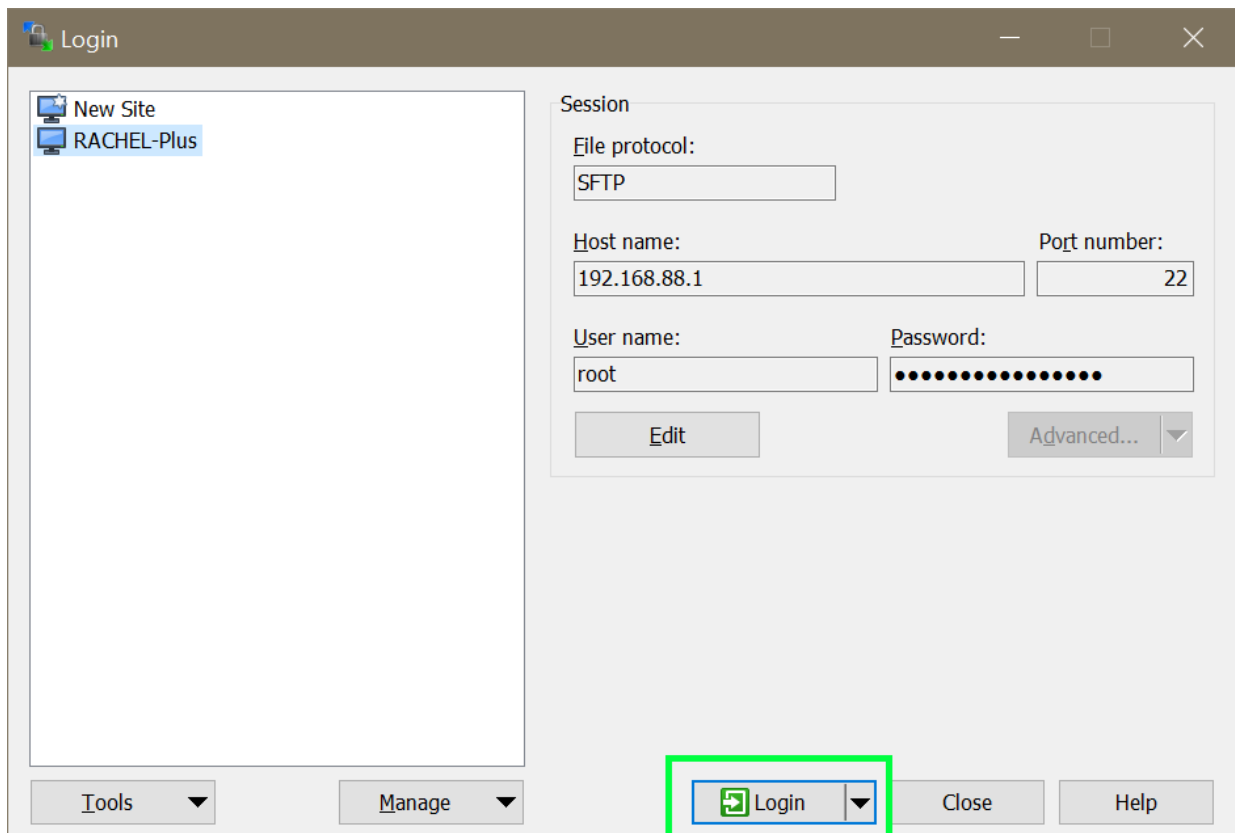
10. Click save



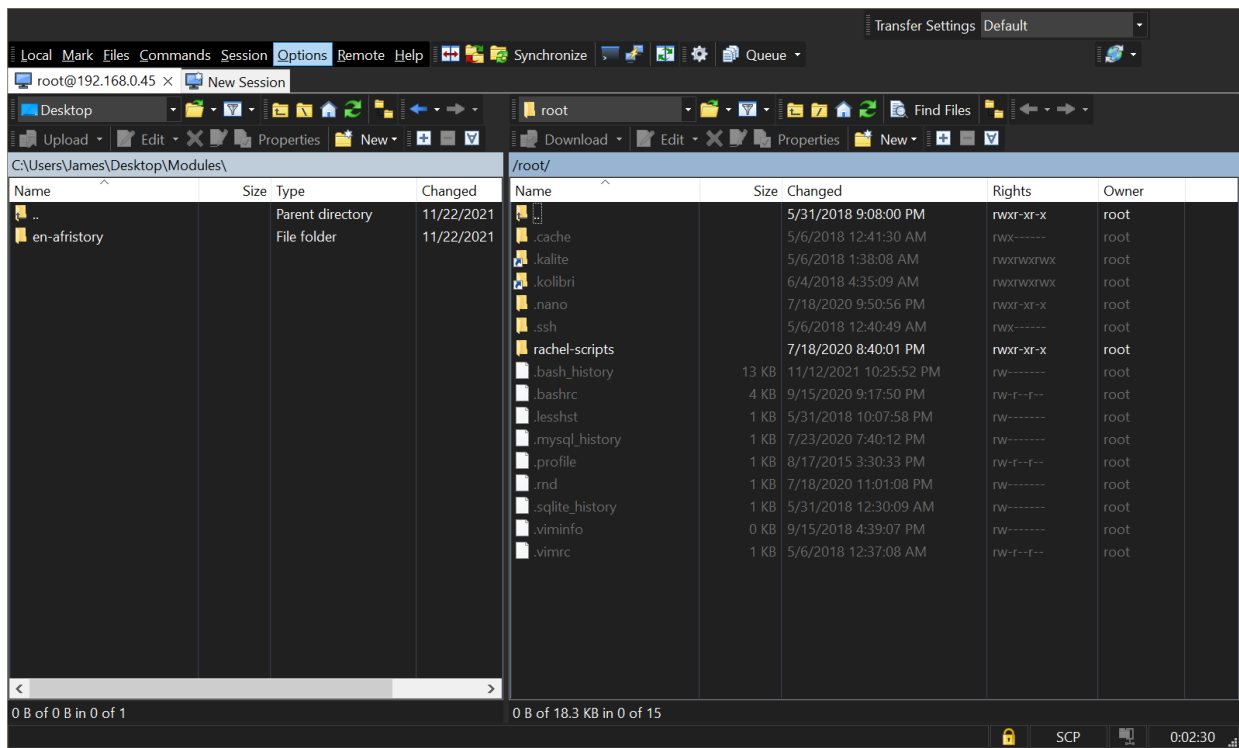
11. Enter a name for your site, then click OK



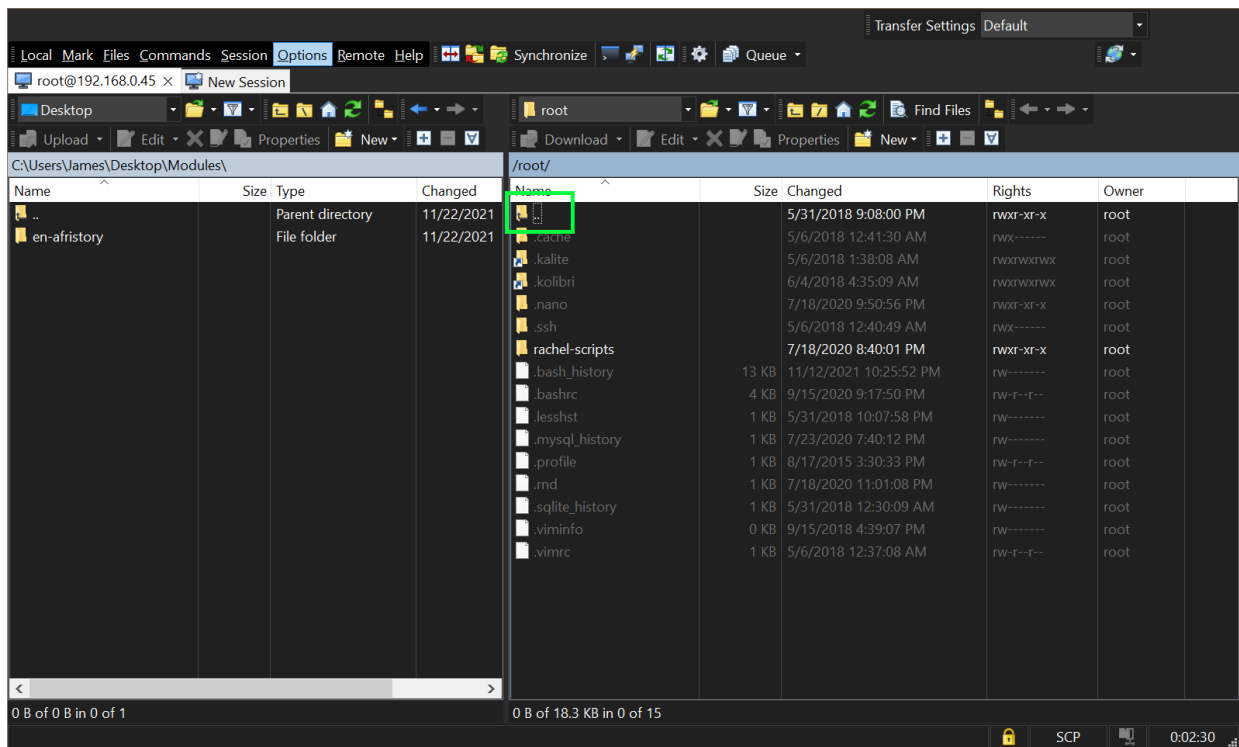
12. Click "Login" to connect to your RACHEL-Plus



13. You should now see two file browser panels. On the left is your PC and on the right is the RACHEL-Plus.

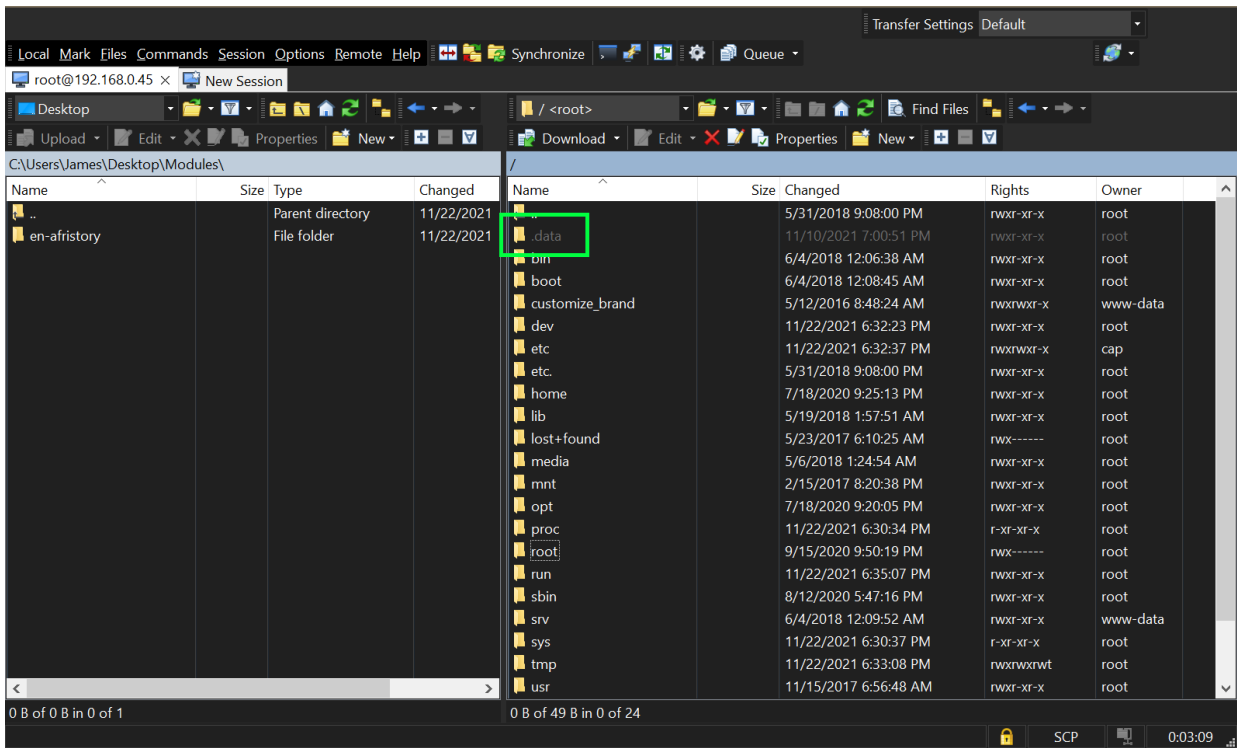


14. Click the two .. on the right panel to go up one directory

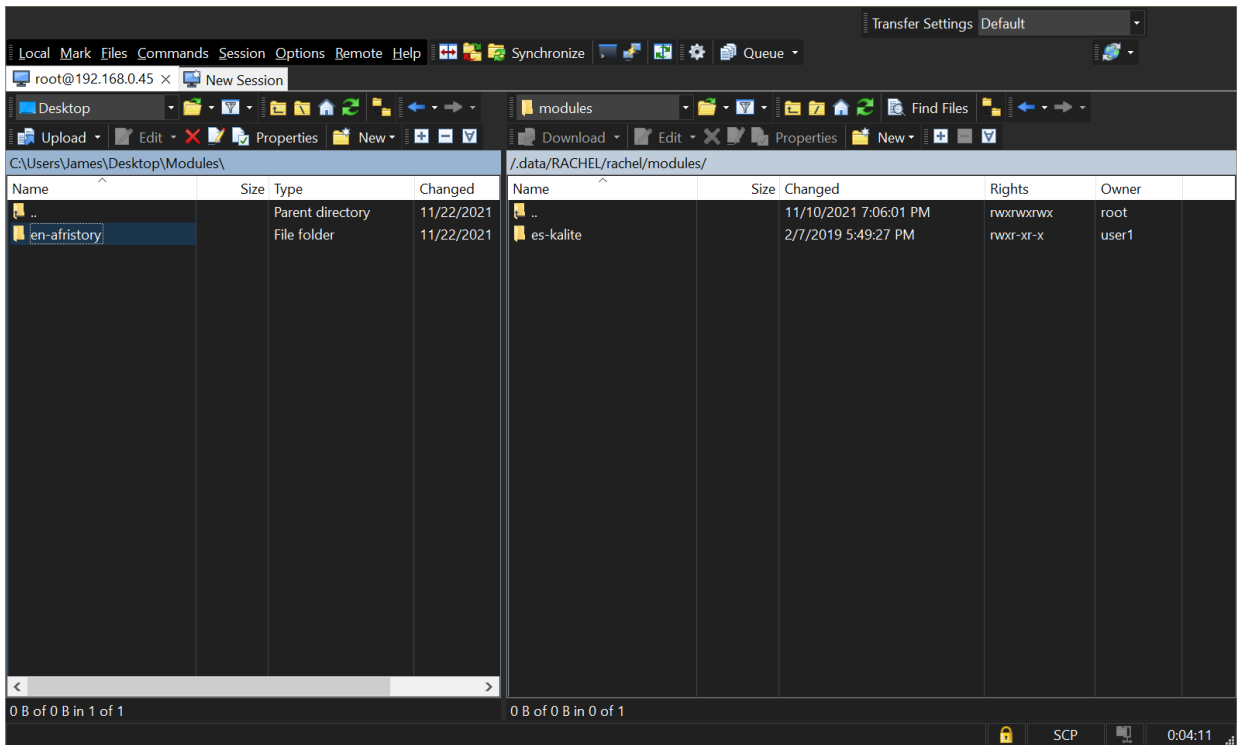


15. On the left side, navigate to your modules folder on your PC.

16. On the right side, look for a folder called "/.data/". If you do not see it, press ALT + CTRL + H to unhide it. You should now see the /.data/ folder

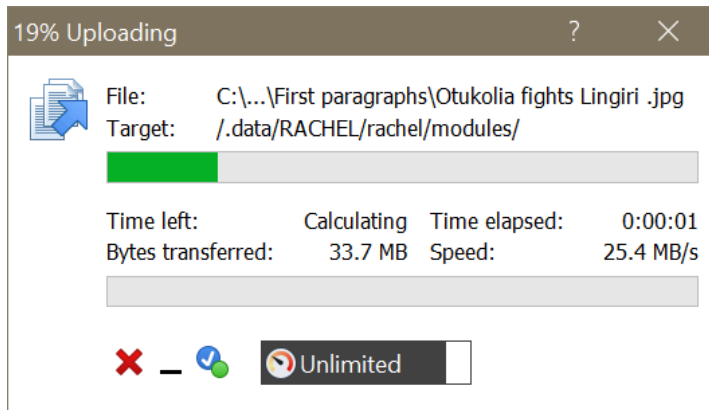


17. Navigate to /.data/RACHEL/rachel/modules



17. Drag your module folder from the left side to the right side to transfer it to the RACHEL. This will transfer modules from your PC to /.data/RACHEL/rachel/modules/

- You can drag multiple folders at once to transfer multiple modules

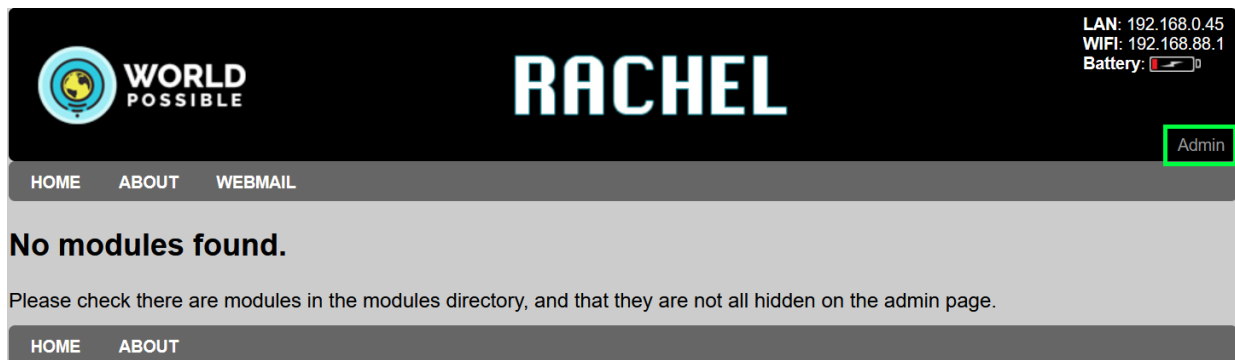


18. Your module will now be available when you refresh the main page of RACHEL.

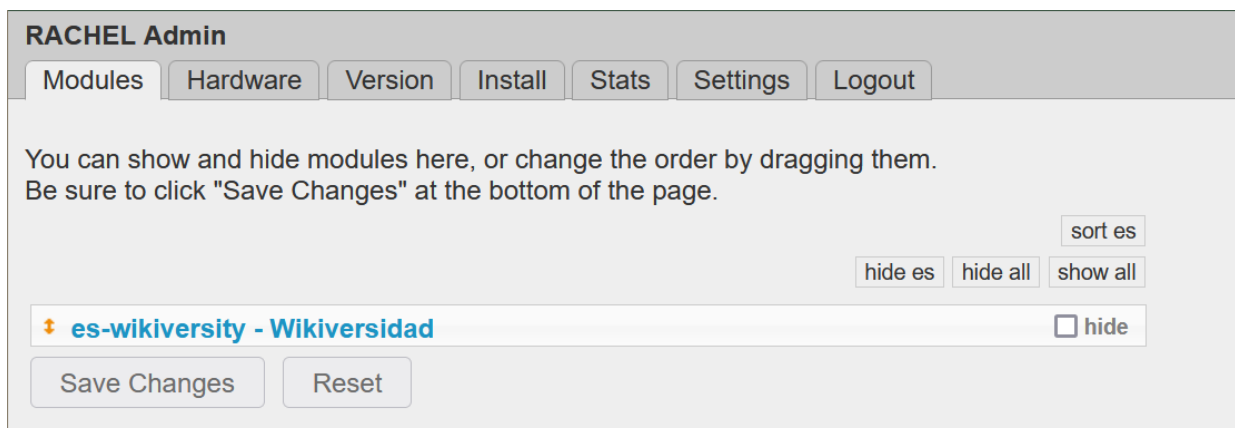
Kiwix Modules

Kiwix based modules will not work until you restart your RACHEL-Plus or follow these steps.

1. Log in to the RACHEL admin interface



2. Navigate to the Modules tab



3. Hide any module

RACHEL Admin

Modules Hardware Version Install Stats Settings Logout

You can show and hide modules here, or change the order by dragging them.
Be sure to click "Save Changes" at the bottom of the page.

hide es hide all show all sort es

es-wikiversity - Wikiversidad hide

Save Changes Reset

4. Click Save Changes

RACHEL Admin

Modules Hardware Version Install Stats Settings Logout

You can show and hide modules here, or change the order by dragging them.
Be sure to click "Save Changes" at the bottom of the page.

hide es hide all show all sort es

es-wikiversity - Wikiversidad hide

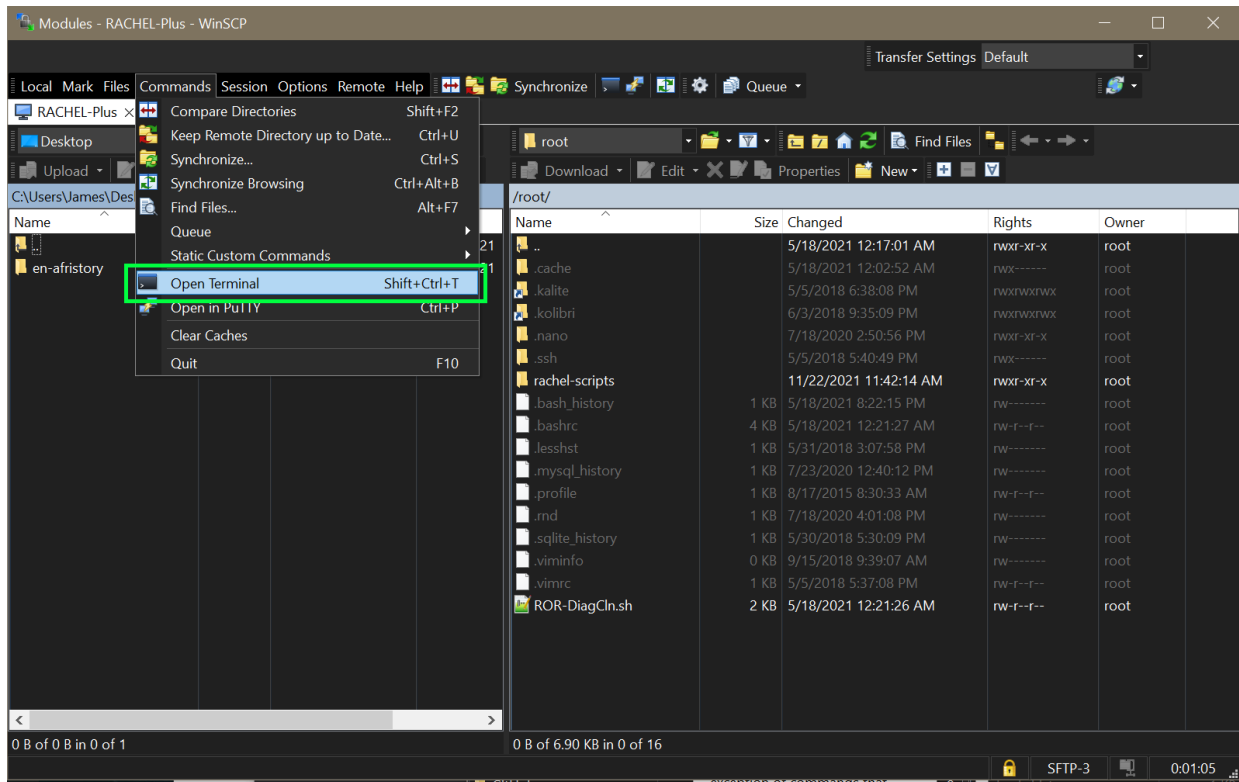
Save Changes Reset

5. Your newly transferred Kiwix module should now be working.

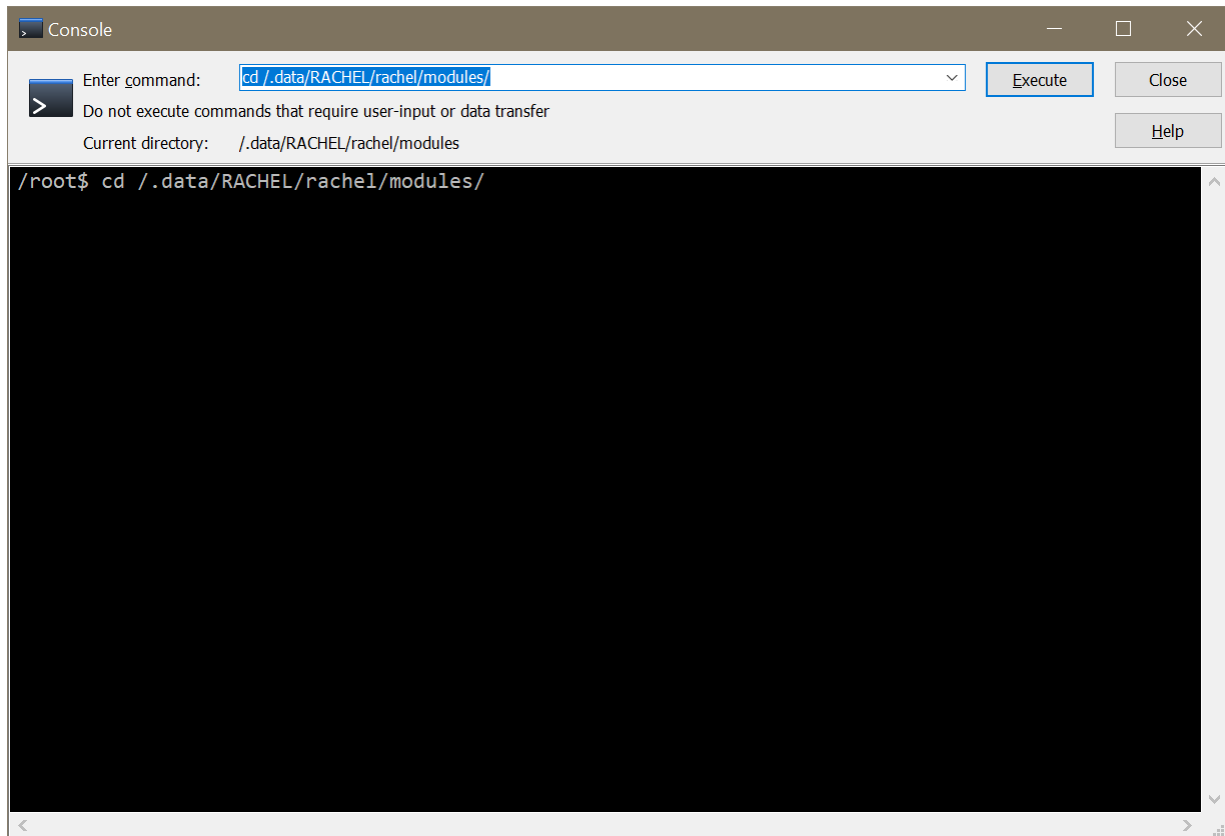
Finish Install Script

Some modules have a file called "finish_install.sh" in their main directory. This is to run extra install steps. Modules with these scripts may not function properly when transferred manually over WinSCP. If you would like to try, these are the steps to run the finish_install.sh script

1. While connected to your RACHEL-Plus with WinSCP, open a terminal



2. Click okay when prompted
3. Type "cd /.data/RACHEL/rachel/modules/" and click Execute



4. Type "cd YOURMODULENAME" and click Execute to go into the module directory
5. Type `sudo bash finish_install.sh` and click Execute
6. This will run the module's `finish_install.sh` script.
7. If successful, the module is now completely installed

